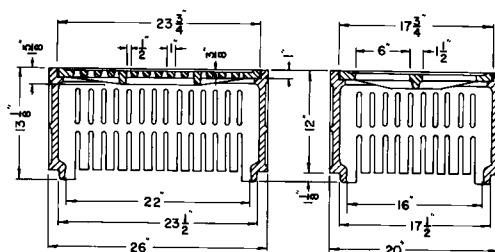


■ Note: When specifying/ordering grates, refer to "Choosing the Proper Inlet Grate" on pages 125-126.
For a complete listing of FREE OPEN AREAS and WEIR PERIMETERS of all NEENAH grates, refer to pages 327-332.

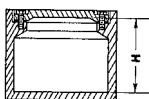
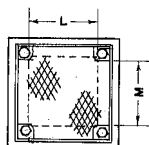
R-7516-D Rectangular Ballast Screen



Can be double or triple stacked as needed.

R-7517 Series Electrical Junction Boxes

Light Duty



Solid box types for bridge and street lighting. Suitable for underground electrical work. Standard boxes furnished with neoprene gaskets and stainless steel cap screws. Cored or tapped holes for conduit not furnished as standard, available if specified at additional cost – send details showing sizes and locations. Units are shipped assembled.

Catalog No.	Dimensions in inches		
	H	L	M
R-7517-B	8	8	8
R-7517-DA	4 1/2	10	6
R-7517-DB	10	12	12
R-7517-DC	10	12	18
R-7517-DE	17 1/8	14 3/4	14 3/4

Supplied By:

**TRENCHDRAIN
SUPPLY**

877-903-7246

www.trenchdrainsupply.com